

Terrarium

an open or closed sample eco-system



first - observe the area you will sample from; what kind of light, water does it need?



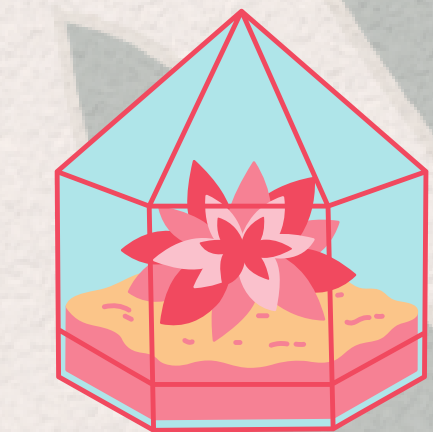
second - small pebbles at the bottom of the glass jar



third - scoop down below the surface (2 inch filled in your jar); arrange some rocks, leaves and twigs (whatever covers the ground of your sample)



four - select one or two small plants - fern, moss, cacti, lichens



five - 1/2 cup of water; cover with cheese cloth - this lets air in but keeps bugs and moisture out



six - try for a temperature and light that mimics your original sampled place;

if mold appears, dry out and try watering later - if not wet enough, add a little water and replace cover